



# 北京外国语大学国际教育学院

Shool of International Education  
Beijing Foreign Studies University



# 北京外国语大学国际教育学院

## BFSU International

Establish the Excellence of International Education

Come Here Go Further

北京外国语大学国际教育学院暨北外国际教育集团（以下简称为“北外国际”）成立于2014年5月28日，直属于北京外国语大学。它随着中国国际化教育发展的需求应运而生，依托北京外国语大学深厚的语言和文化底蕴，以大学视角和国际视野，引领国际教育理念和实践的新突破，“北外国际”致力于搭建一个合作的平台，走出大学的围墙，与有需要的人、在有需要的地方共享北外国际教育的理念和实践。北外国际教育品牌包括：北外青少英语、出国留学、国际游学、合作办学、考试培训。



### ABOUT THE BFSU

The School of International Education (also operating as BFSU International Education Group) is part of Beijing Foreign Studies University. We commit ourselves to the exploration and establishment of the excellence of international education concepts and practices by constructing a collaboration platform with all parties.



北外国际业务模块

Educational Programmes

北外出国  
BFSU Study Abroad



北外学游  
BFSU Study Tour

北外国际成长契约  
Learning Roadmap, BFSU International



北外附校  
BFSU Schools

北外青少英语  
ePLUS for K-12 BFSU



北外国际课程中心  
BFSU International Course Centre

国际考试  
International Exams and Assessments



合作办学  
BFSU Partnership



# 北外青少英语 E-PLUS for K-12



培养4-18岁青少年成为中国的国际人，国际的中国人。“北外青少英语”为中国4-18岁青少年提供了一条国际素养成长路线图。它以大学视角和国际视野，自主研发出符合我国青少年学习生态的三大支柱课程体系：语言素养、阅读素养和人文素养。

“ 有规划才有未来 ”

Come Here Go Further ”

北外青少英语以大学视角和国际视野，为中国4-18岁青少年提供国际化素养教育，让孩子们在英语学习的起点就瞄准终极目标，不走弯路，直达目的地。

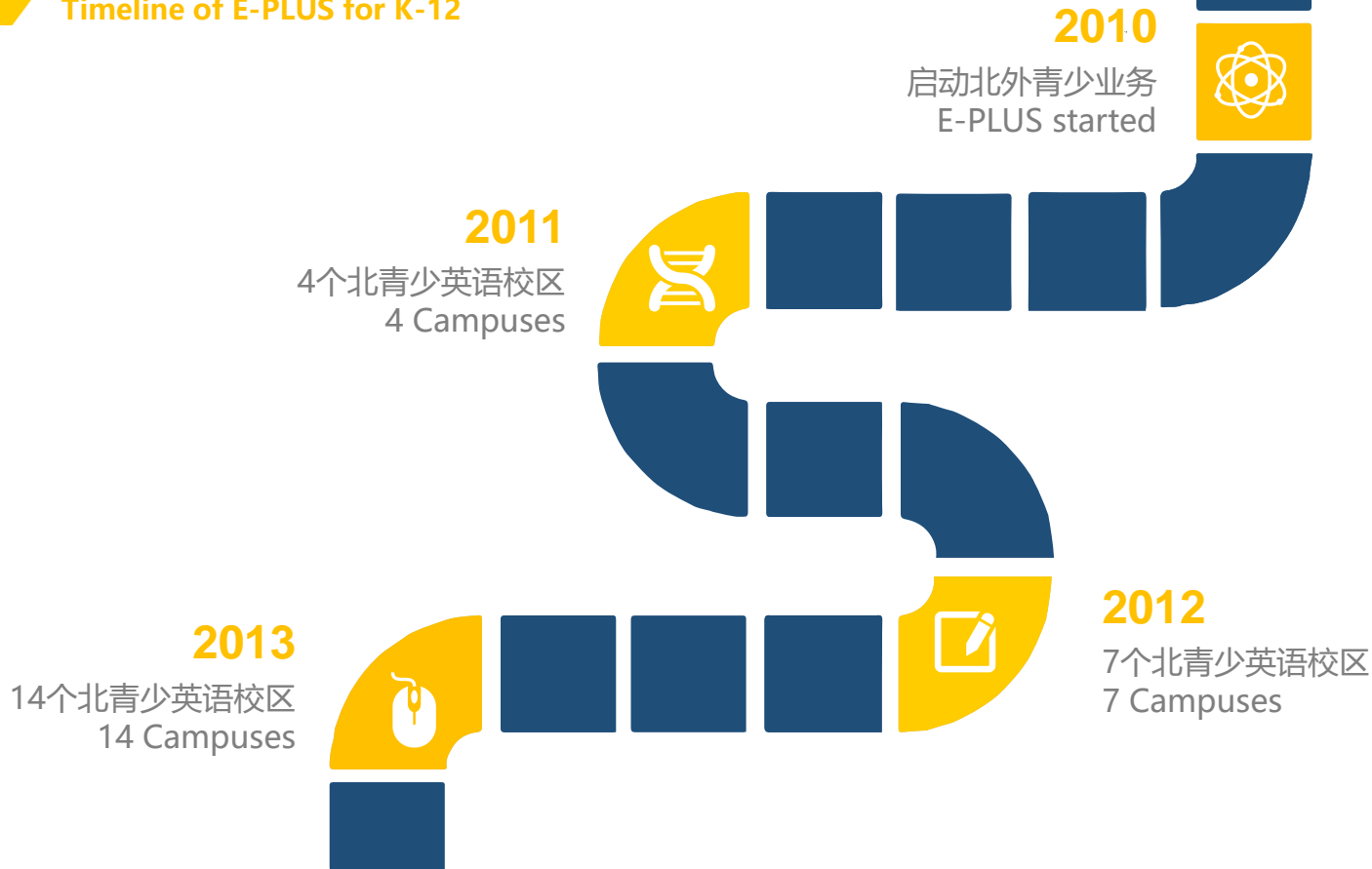
### K-12 Language Education (E-PLUS for K-12)

E-PLUS for K-12 designs a growing path for 4-18 year-olds. It aims to prepare them to cope with a cross-cultural environment from both national and global perspectives by building up their competence in three areas (known as three pillars): language, reading and humanities. It provides courses based on internationally-recognized ELT standards and evaluation scheme.



# 北外青少英语发展大事记

Timeline of E-PLUS for K-12



**2014**

17个北青少英语校区  
17 Campuses



**2015**

21个北青少英语校区  
21 Campuses  
至此全国在读学员已超过7000人  
More than 7,000 students



**2016**

26个北外青少英语校区  
26 Campuses  
至此全国在读学员已超过15000人  
More than 15,000 Students



**全国26个校区**

**26 Campuses in four cities nationwide**

- 北京 Beijing 19个校区 19 Campuses
- 南京 Nanjing 4个校区 4 Campuses
- 合肥 Hefei 1个校区 1 Campus
- 西安 Xi'an 2个校区 2 Campuses





# 出国留学项目

Studying Abroad  
Programmes





## 出国留学项目

Studying Abroad Programmes

致力于为13岁以上有志于接受海外优质教育的中国学生定制出国留学方案。从语言、学术、跨文化沟通、专业和人文素养五个方面打造出国留学成功之路。提供从留学咨询、语言诊断、学术建议、课程设计、教学实施、考试报名、院校申请、签证服务、海外协助等一条龙服务。我们在为孩子打造一个平台：它可以连接基础教育和高等教育；它可以连接课内教育和课外教育；它可以连接学校教育和家庭教育；它可以连接学科教育和素质教育；它可以连接中国教育和全球教育...它拥有北外积淀深厚的品牌信誉、教育经验和优质资源，致力于实现让学生“来这里，走更远” (Come Here Go Further) !

“从这里走向未来  
Come Here Go Further”

We offer prep-programmes to prepare Chinese students, who plan to pursue overseas education, in their competence of language, academics skills, cross-cultural communication, and subject basics.

We provide a full-package service including consulting, training design and delivery, application to overseas schools and universities.



**STUDYING  
ABROAD  
PROGRAMMES  
(PASS)**



出国留学项目

Studying Abroad Programmes

Summer and Winter Campus  
海外任务型游学

PASS留学预科教育  
Prep-Programmes for  
Schools and Universities



留学申请服务  
Schools and University  
Application Service

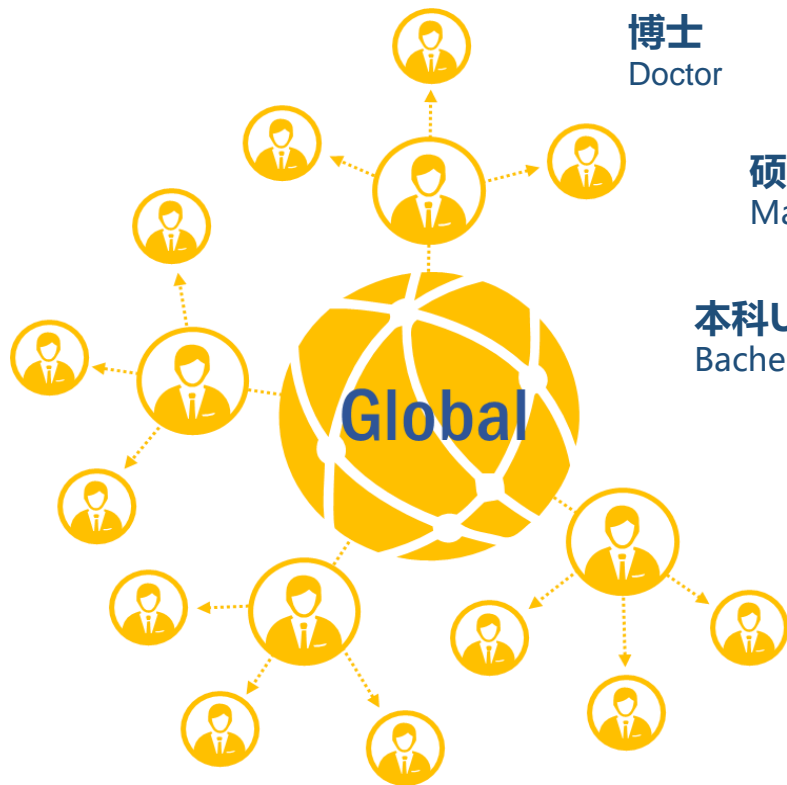
VIP留学定制服务  
Customized VIP Service



## 出国留学项目

Studying Abroad Programmes

英国UK  
美国USA  
加拿大Canada  
澳大利亚Australia  
意大利 Italy  
法国France  
俄罗斯Russia



博士  
Doctor

硕士M-PASS  
Master ( M-PASS )

本科U-PASS  
Bachelor ( U-PASS )

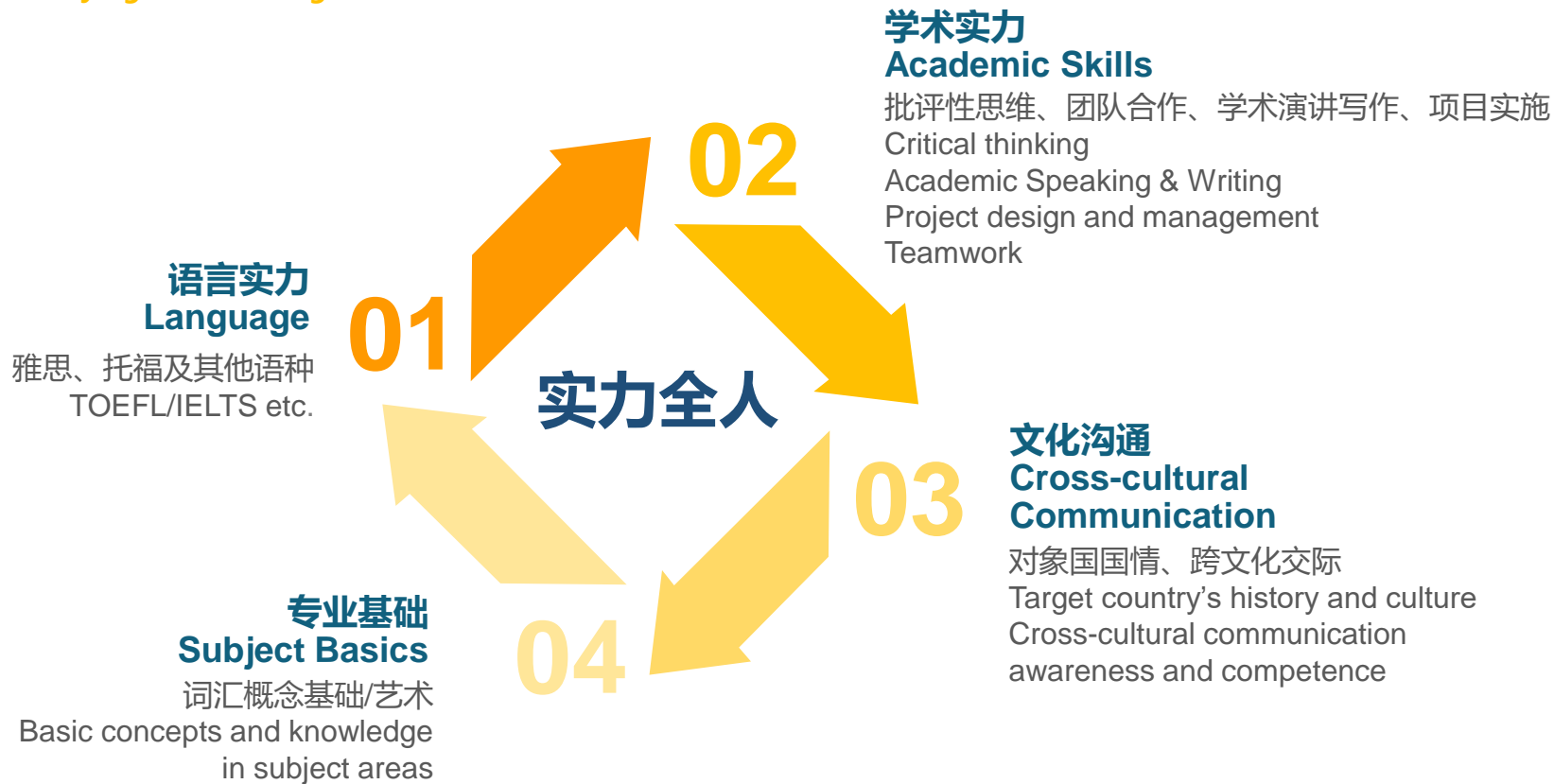
高中H-PASS  
High School ( H-PASS )

留学定制  
Customized Service  
(V-PASS )



## 出国留学项目

Studying Abroad Programmes



# 合作办学

## BFSU Schools





## BFSU Schools

BFSU International collaborates with local governments and school teams to set up full-time primary, junior and senior high schools branded BFSU. We provide support in strategic development, language education curriculum design and delivery, staff training and evaluation, international exchanges and other resources to establish schools with international education orientation.

By far, we have 4 BFSU-brand schools that have officially opened and registered student number has reached 3360. We have also set up international programmes at 12 high schools in 10 provinces in China as our experimental bases.

## 国际化教育定制服务

为学校完善和提升外语教育和国际化办学特色提供相关的服务，包括国际合作交流项目、师生互换、外语师资培训和评估、外语课程设计、学生外语水平评价、科研指导等。

## 北外附属学校

参与合作校的管理、教师共同体建设、课程体系建设、学术科研活动、校园文化建设等。

## 国际化课程实验基地

提供国际化课程的设计教学、师资培训与科研、国际交流和留学申请一条龙服务。

Teacher  
Knowledge  
Test



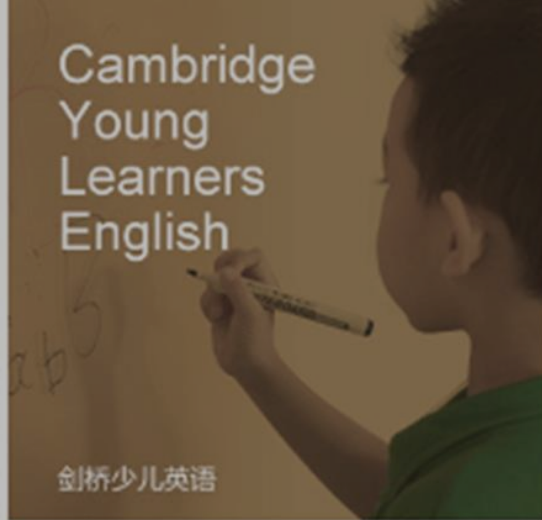
TKT

Law School  
Admission  
Test



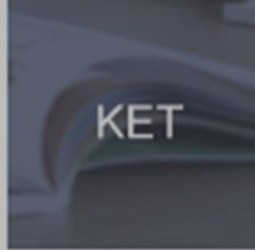
LSAT

Cambridge  
Young  
Learners  
English

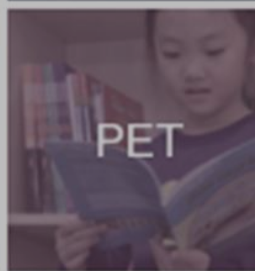


剑桥少儿英语

KET



PET



ETS  
TOEFL



托福

IELTS



雅思

## 国际考试 Exams and Assessments

CPE

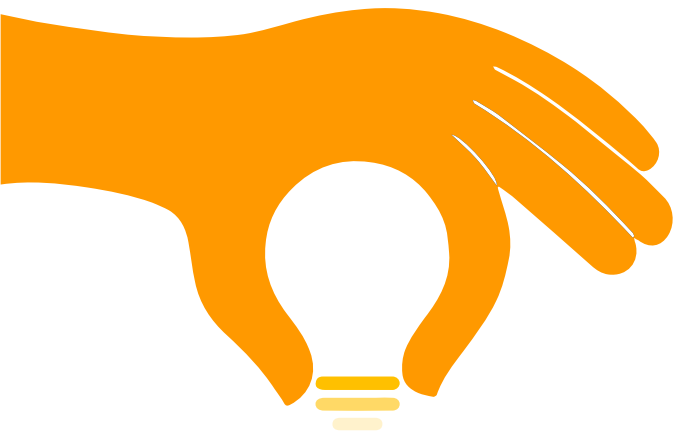


CAE



FCE





## 国际考试 测评 分析

北外国际的国际考试中心是多项国际考试的考务中心，并且承担着考试研发、实验、评阅、成绩分析等多项职能。

## International Exams and Assessments

The Exam and Assessment Department of BFSU International administers various international exams. It also conducts research in assessment, test design and item bank construction, score analysis, etc. Annual test candidates reach 40,000.





## 国际考试

Exams and Assessments



剑桥少儿英语 (YLE)  
英语入门英语 (KET)  
初级考试英语 (PET)

### 通用英语考试

第一英语证书考试 (FCE)  
高级英语证书考试 (CAE)  
熟练英语证书考试 (CPE)  
雅思 (IELTS)  
托福 (TOEFL)

### 学术英语考试

A-LEVEL  
LGCSE

### 国际学科考试

### 引进中的考试

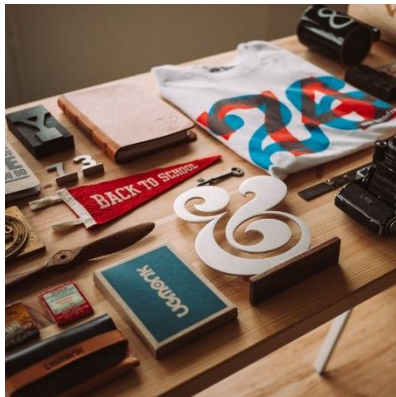
HMH出版集团  
综合语言诊断体系  
阅读诊断体系  
TOEFL Primary  
TOEFL Junior

### 教师证书考试

剑桥英语教学能力证书  
(TKT)

### 国际考试分析

发布国际考试分析  
(剑桥五级考试分析)



# 北外国际成长契约

## Learning Roadmap BFSU International



北外国际“成长契约”是为有志于出国留学的学生量身定制的培养方案，其目标是帮助学生在科学规划的指导下成长为具备国际素养的人才，与国际教育无缝对接。“成长契约”由语言素养、学科素养、人文素养三大素养支柱组成，包含咨询、诊断、规划、实施、调整、评价六项服务内容。

Learning Roadmap, BFSU International is a counselling service tailored to every individual student who wishes to pursue overseas education at school or university levels. It provides planning in language education, academic studies and social activities to help students prepare in advance for their overseas education.

# 北外学游

## BFSU Study Tour

“北外学游”集中国文化名城之旅、国际学游、微留学等学游项目为一体，为孩子不同阶段的成长提供国内和海外任务型学游线路，专业教师全程带队，任务书一路随行，突出以“学”为主，综合提升孩子在外语、国学、学科和人文四大素养上的兴趣和视野。

BFSU Study Tour offers task-based tours of China's famous cultural cities, summer and winter camps to schools and universities of English-speaking countries to 8-18 age group students. “Study-oriented” is the highlight of these tours, emphasizing on arousing students' interest and broadening their horizon in areas of foreign languages, cultures, academic skills and social activities.



# 北外课程中心

## BFSU International Course Centre

“北外国际课程中心”依托于北京外国语大学雄厚的师资力量和丰富的教学资源，以及与海外学校、大学和教育机构的合作，旨在打造国际和本土教育相融合的特色国际教育课程，为学生提供走向全球优质教育的直通车。“北外国际课程中心”作为剑桥大学国际考试委员会授权的合作伙伴，引进了全日制英国初中IGCSE和高中A-Level课程体系，并得到美国大学理事会和教育部考试中心的授权，成为美国大学先修课AP考试的考点。截至2016年，已在北京和苏州设立了两个国际课程中心。

With Beijing Foreign Studies University's distinguished faculty resources and rich teaching resources, as well as partnership with overseas schools, universities and educational institutions, BFSU International Course Centre provides international courses as a pathway for Chinese senior high school students to overseas undergraduate studies.

As an associate partner of Cambridge International Examinations (CIE), BFSU International Course Centre runs full-time IGCSE and A-Level programmes. It is also an AP exams centre authorised by the US College Board and the National Education Examinations Authority (NEEA). By the year 2016, it has established two International Course Centres respectively in Beijing and Suzhou.



# 北外课程中心

## BFSU International Course Centre



合作办学旨在各地学校设立“北外国际化外语特色教育实验基地”，提供国际化教育的定制服务，包括国际合作交流项目、师生互换、外语师资培训和评估、外语课程设计、学生外语水平评价、科研指导等。截至2016年，已在10个省市的12所高中建立了国际化外语特色教育实验基地，并为毕业学生提供了涵盖英语国家和意大利、俄罗斯等国的留学直通车服务。

BFSU International collaborates with local schools to establish “BFSU Experimental Base” and provide tailor made services including international partnerships, staff and student exchanges, foreign language teacher training and evaluation, foreign language curriculum design, students' foreign language proficiency evaluation, academic research guidance, etc. Up until 2016, we have set up such experimental bases in 12 senior high schools in 10 provinces and cities, offering pathway studying abroad programmes to English-speaking countries, Italy and Russia.



**教师发展**  
**Teacher**  
**Development**



## 教师发展

### Teacher Development

1

为从事英语教的教师设计职业成长路线图

2

为教师、课程研发人员和教学管理人员设置科学合理的职业进阶

3

为教师的岗位培训和职后发展量身打造系统课程和评估方案

## Career Growth and Development

BFSU International provides English teachers a promising career development roadmap including pre-service and in-service training, career development and evaluation scheme.





# What we can offer

## Competitive Welfare

Legal working visa, competitive basic salary, free non en-suit accommodation, generous quarterly bonus, round-trip tickets reimbursement, 10 days' paid holiday and extra health care.

## Living Assistance

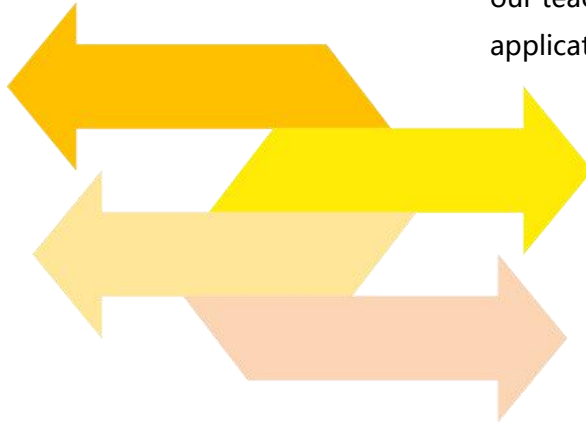
Pick-up service at Beijing airport, shared accommodation and a thorough introduction of the neighborhood, all basic things like SIM card, travel card and others will be taken care of on your first week here; you will feel just like home!

## VISA Assistance

We have a professional VISA team to help our foreign teachers to apply for their Work VISA. From reminding our teachers along every important step in their visa application to getting the VISA.

## Vocational Training

Systematic teaching orientation, regular professional teaching training, free 12-hour monthly Chinese lessons, interesting team activities and trips.







# 联系我们 Contact US

**Address:** BFSU International, Beijing Foreign Studies University  
No. 19, Xisanhuan Beilu, Haidian district  
Beijing, China 100089

**Tel:** (0086) 010-88814081

**Web:** [e.beiwaiguoji.com](http://e.beiwaiguoji.com)

**Join Us:** [zhaopin.beiwaiguoji.com](http://zhaopin.beiwaiguoji.com)

