



INSPIRING EXCELLENCE





Contents

OUR SCHOOL	04	CAMPUS & FACILITIES	31
<ul style="list-style-type: none">• Welcome from the Head of School• Vision and Mission• Swiss Canton of Patronage		SCHOOL LIFE	33
		<ul style="list-style-type: none">• Health & Nutrition• Field Trips• School Teams & After-School Activities	
ACADEMICS	10	UNIVERSITY RECOGNITION	41
<ul style="list-style-type: none">• Curriculum• Early Years• Primary Years Programme• Middle Years Programme• Diploma Programme• Swiss Baccalaureate• Visual Arts, Music and Design• Technology Innovation		<ul style="list-style-type: none">• IB DP Recognition	
		ADMISSIONS	43
BOARDING SCHOOL	27	OUR LOCATION	45
<ul style="list-style-type: none">• Why Board?• Pastoral Care• Boarding Options		FACT SHEETS	46
		<ul style="list-style-type: none">• Tuition Fees: Day School• Tuition Fees: Full Boarding• Tuition Fees: Weekly Boarding	

ED • RISK-TAK

CARING • O I-MINDED • PR

INSPIRING EXCELLENCE

Our school values are at the heart of everything we do. This B.E.S.T. approach to education recognises the importance of developing lasting human values alongside academic success.





Welcome from the Head of School

We have created a unique school in the heart of Dubai where children from all over the world can live and thrive in a multilingual and multicultural environment. In the 21st century, we are moving into a world where English looks set to remain the *lingua franca*, but where being able to speak, read and write in only one language is no longer enough. At SISD we believe that being 'international' means opening one's mind to other cultures and different ways of thinking.


Our students are uniquely privileged to be learning the skills and aptitudes required to thrive in a perpetually changing world, as a fundamental part of their education. SISD is first and foremost a uniquely international community where students, teachers and staff from all over the world work, live and prosper together. Well over 60 nationalities are represented on campus, which creates an exceptional mix of languages, cultures and ethnic backgrounds.

Our approach to learning encourages creativity, problem-solving and good decision-making. SISD follows the framework of the International Baccalaureate and offers an exceptional education focused on both academic excellence and personal growth. We encourage students to take risks, become compassionate lifelong learners and responsible citizens, who care for one another and contribute to a strong society through intercultural understanding and respect.

Our students have the opportunity to become multilingual, with the option of entering one of our immersive bilingual programmes in either of the Swiss languages of French and German or studying an additional language within our English+ stream. Our international programmes reflect a sincere commitment to a Swiss vision of excellence in education that enables our students to embrace future opportunities fully. Our team of international teachers is made up of highly qualified professionals who all share one goal: to provide quality education to all our children in a caring, nurturing and supportive environment.

We hope that you will enjoy discovering for yourself what makes SISD so special.

MR NORBERT FOERSTER
HEAD OF SCHOOL



We believe in maintaining high standards and aspiring to be the best that we can be. We foster the spirit of enquiry, encouraging both creative and critical thinking.



Vision and Mission

The Swiss International Scientific School in Dubai (SISD) is a leading international school where future generations are inspired to become confident and enthusiastic lifelong learners, ready to embrace the opportunities and challenges of a global world.

SISD provides an inspiring, inclusive and challenging learning environment while celebrating academic excellence. We encourage and support all our students to become successful, global-minded, enthusiastic lifelong learners who will confidently take advantage of future opportunities and help make a difference. Together with our teaching staff and parents, we support our students to develop their potential fully in a motivating, multilingual and international learning environment.

Bilingual

With English serving as the foundation, our students will also speak, read and write in French or German and Arabic. As global citizens we celebrate diversity, treating all languages and cultures with equal respect.

Excellence

We believe in maintaining high standards and aspire to be the best that we can be. We foster a spirit of enquiry, encouraging both creative and critical thinking.

Sustainability

We believe that social, cultural, economic and environmental awareness prepare us to play our part in shaping a better future, both for ourselves and for those around us. Our school campus is eco-friendly, using less energy to create a comfortable and healthy environment.

Together

In our international community, we know that we are at our best when we all work together. We view active participation in the community, from the most local to the most global, as the foundation of a valuable life.



BILINGUAL



EXCELLENCE

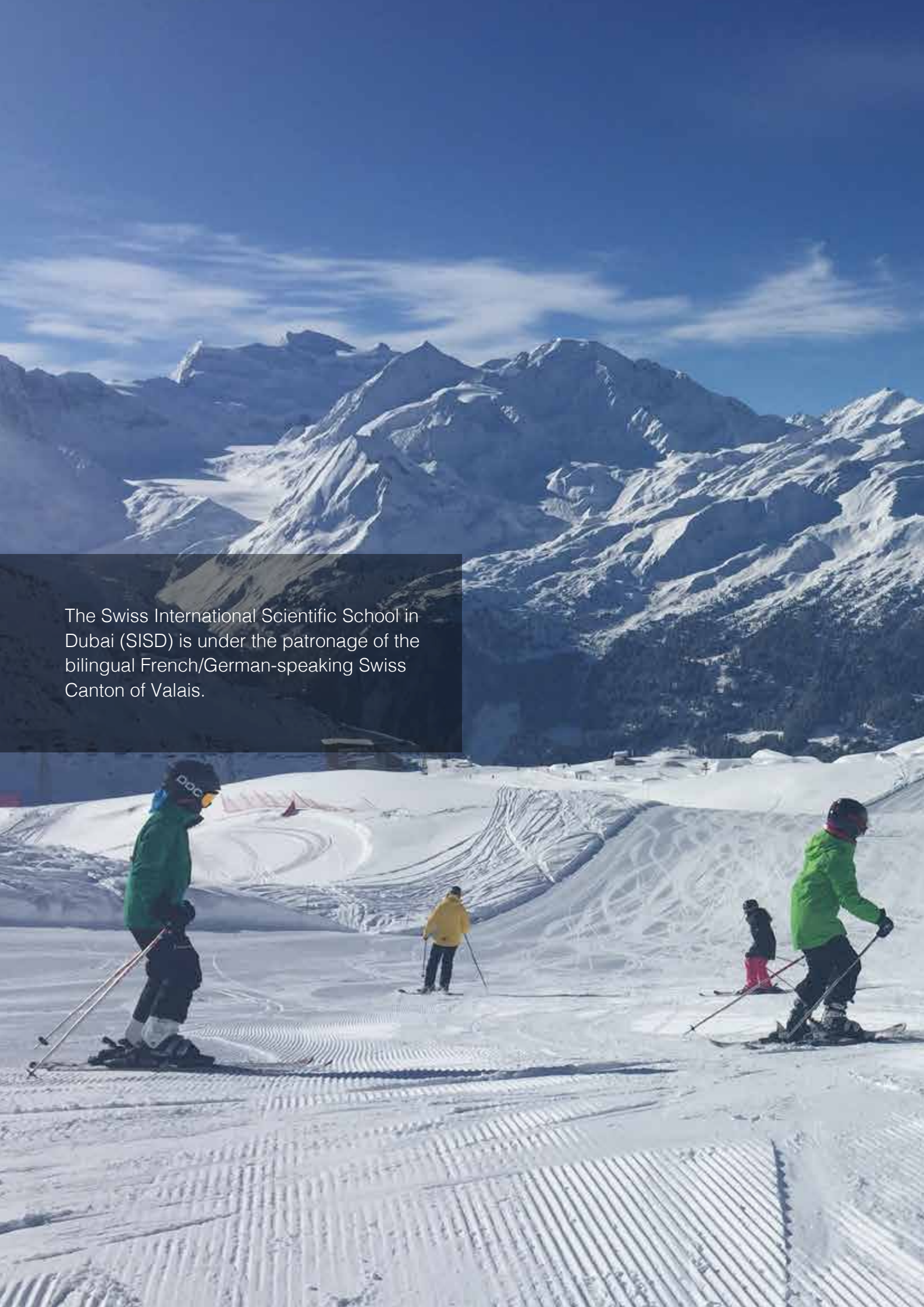


SUSTAINABILITY



TOGETHER





The Swiss International Scientific School in Dubai (SISD) is under the patronage of the bilingual French/German-speaking Swiss Canton of Valais.




Swiss Canton of Patronage

Recognised for its high academic performance as per the PISA report (Programme for International Student Assessment), the Canton of Valais supports SISD in an advisory capacity on academic matters.

The partnership with SISD is designed to be collaborative in terms of knowledge transfer, as well as to reinforce quality assurance, achieved through monitoring the quality of teaching, learning and reviewing assessments and examinations. Educational experts from the Canton of Valais provide additional professional development opportunities for our teachers. Further benefits include active cultural exchanges between our school and the Canton through winter and summer camps.

The Canton of Valais, one of 26 in Switzerland, is situated in the southwestern part of the country. It is widely known for being home to the Matterhorn Mountain and for its resort towns, such as Crans-Montana, Verbier, Saas-Fee and Zermatt.





At SISD we follow the framework of the International Baccalaureate (IB) programme from Pre-KG to Grade 12 and additionally the Swiss Baccalaureate programme from Grade 6 onwards.



Academics

At SISD we follow the framework of the International Baccalaureate (IB) programme from Pre-KG to Grade 12 and the Swiss Baccalaureate programme from Grade 6 onwards. The Swiss International Scientific School in Dubai is an IB Continuum World School authorised to offer and teach the IB Primary Years Programme (PYP), IB Middle Years Programme (MYP) and IB Diploma Programme (DP). SISD is also candidate school* for the International Baccalaureate (IB) Career-related Programme.

As an IB world school, SISD shares a commitment to high quality, challenging, and international education. The IB programme creates, develops and sustains a community of life-long learners and provides a coherent learning experience.

It aims to develop enquiring, knowledgeable and caring young people who will help to create a better and more peaceful world through intercultural understanding and respect. It encourages students across the world to become active and compassionate learners.

With an emphasis on developing a multilingual and multicultural school community, SISD offers three different streams:

- The bilingual English/French stream (with Arabic)
- The bilingual English/German stream (with Arabic)
- The English+ stream with additional languages (French or German with Arabic)

The bilingual programmes are generally suited to learners with strong language competence in French or German. Our specific French and German language arts curricula are based on the PYP and MYP programmes and integrate competences, skills and objectives of the Swiss, French or German curricula.

Inclusion

At SISD, we are committed to being an inclusive school and strive to meet the needs of all our students by minimising or removing barriers to learning and supporting the extension of gifted and talented students. Due to the specific dynamics of a bilingual school curriculum, we carefully assess each student's suitability for our programmes at the admissions stage so that they are able to work towards reaching their full potential when they join our school. Inclusion is a shared responsibility and we ask parents to inform us of any individual needs, identified or suspected. Our inclusion team subsequently plans and implements appropriate intervention and support for optimum learning to take place.

**English / French
Bilingual**

**English / German
Bilingual**

**English+
French or German**

*Candidate status gives no guarantee that authorization will be granted.



Curriculum



The International Baccalaureate (IB) is an international educational foundation which was established in 1968: its headquarters are in Geneva, Switzerland. In the mid-1960s, a group of teachers from the International School of Geneva (Ecolint) created the International Schools Examinations Syndicate (ISES), which would later become the International Baccalaureate Organization (IBO) and then the International Baccalaureate (IB).

The framework for what would eventually become the IB Diploma Programme (IBDP) was provided by Marie-Thérèse Maurette's 'Educational Techniques for peace. Do they exist?' published in 1948. The IB Diploma Programme (DP) was introduced with the original purpose of facilitating the international mobility of students, by providing a curriculum and qualification recognised by universities around the world.

The aim of all IB programmes is to develop internationally-minded people who, recognising their common humanity and shared guardianship of the planet, help to create a better and more peaceful world. Today, schools, teachers and students are expected to make a sincere and visible effort to align their own respective philosophies with the values of the IB Learner Profile.



The IB and its offering of academic and vocational programmes, continues to grow at an impressive rate. More and more students, parents and schools are appreciating the opportunity to look beyond one's own borders afforded by an international education.

The academic programmes cover the ages of 3-18, with the Primary Years Programme introducing an enquiry-based approach to learning as a foundation. The Middle Years Programme builds on this platform, while introducing the study of more discrete academic disciplines. The Diploma Programme prepares students for tertiary education, but also equips them to flourish in institutions that are often in a country other than that in which they sit their Diploma examinations.

Much energy is invested in ensuring that assessment is valid and useful throughout the programmes. Standards are recognised as being high but also consistent: In 1993, the IBDP and 'A' Level pass rates were on level pegging at just over 80%. In 2014, IBDP results remained roughly unchanged at 79%, whereas 'A' Level pass rates had hit 98%. This consistency and reliability stems in part, from the fact that final IB exams are moderated, corrected and graded centrally by the IBO in the DP and since 2016, in the MYP.





Early Years



The Early Years programme at SISD has been carefully designed to encourage enquiry-based learning for children aged between 3 and 5. Students are fortunate to learn in a multilingual and multicultural environment that provides a wide range of opportunities academically, culturally, socially and physically.

The IB acknowledges that young learners are intelligent, capable and creative individuals who develop and learn at different rates. They explore their environment and learn about their world through play and relationships with family, teachers and

community members. Early learning in the Primary Years Programme is a holistic experience focusing on the development of the whole child, addressing social, emotional, physical and cognitive needs.

Teaching and Learning

Learning is hands-on and students are therefore given the freedom (in a prepared environment guided by the teacher), to enquire into and learn about the world around them. This encourages social interaction and team work. Each learning style and attainment level is taken into account by teachers, as every student learns differently. Children participate in free flow activities that allow them to progress at their own pace, develop independence and have the freedom to move between indoor and outdoor areas.

Children take part in specialist classes such as Music, Physical Education and Art. Early Years learning instills a desire for life-long learning. Our aim is that children learn real life skills to enable them to succeed in today's ever changing environment. We encourage children to be independent thinkers, develop excellent communication skills and become principled, open-minded individuals.

Languages

Bilingualism is defined as the regular use of two or more different languages. We are committed to early immersion, which research has shown to be the most suitable tool that allows children to have command of more than one language at a highly functional level. The aim of immersion at SISD is the development of two or more languages, as well as the appropriate knowledge of the subject content and intercultural competence.



The language input is age-appropriate, comprehensible, and both lexically and structurally rich. Language contact is action- and content-oriented.

- In Pre-Kindergarten, the main teacher is a native French or German speaker with an English speaking teaching assistants.
- In KG1, English is the main language of instruction and children are exposed to French and German through contact with teaching assistants. In addition, children attend one daily lesson of French or German, taught by a qualified language teacher.
- In KG2, children are taught by a native English-speaking teacher and a native French or German-speaking teacher, receiving instruction in both languages on a daily basis. Arabic lessons are taught on a weekly basis.

Facilities

Our school offers spacious classrooms of up to 100m² with welcoming colours to make the environment stimulating and enjoyable for children. The outdoor play areas include an adventure playground and a small swimming pool and have been carefully designed to be safe, yet fun places for engaging activities.



Primary Years Programme



The Primary School at SISD encompasses Grades 1 - 5, ages 6 - 10. Students in the Primary School follow the IB Primary Years Programme (PYP), a curriculum framework that is learner-centred, enquiry driven, concept-based and transdisciplinary.

Our approach provides multiple points of entry for students and gives teachers plenty of scope for small group and one-to-one facilitation. Learning through enquiry allows multiple opportunities for personalising learning while building the cognitive, social & emotional, and communication skills

necessary for success, both in school and in life. Enquiry capitalises on natural curiosity, guides activities and makes learning authentic. Our learners are busy making meaning of their world in significant, relevant, engaging and universal contexts.

We focus on the development of the whole child as an enquirer, both inside and outside the classroom. Our programme is organised in a framework guided by six transdisciplinary themes of global significance, explored using knowledge, concepts, skills and attitudes.

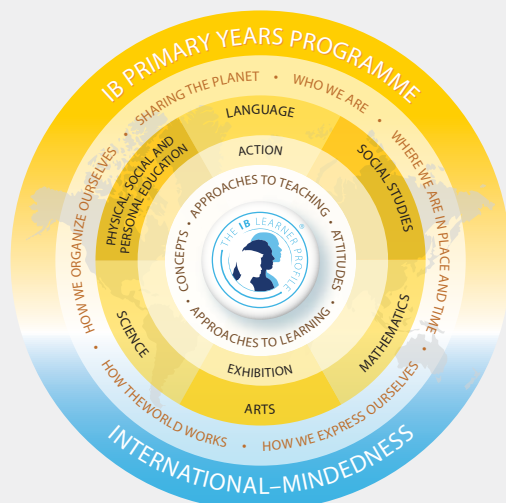
Our academic programme aims to:

- address the academic, social and emotional well-being of our students,
- facilitate student understanding of the world and their place in it,
- establish personal values as a foundation upon which international-mindedness develops and flourishes.

Bilingual Programmes

At SISD, we currently offer two fully immersive bilingual streams: English/French and English/German. We define bilingualism as the regular use of two or more different languages in daily life. Therefore, a bilingual person is able to communicate, think and reflect in (at least) two different languages, even if one of the languages remains dominant. Bilingualism is designed to offer learners the chance to develop international-mindedness, to broaden their skills and capabilities and to acquire the information needed to access other cultures.

In the bilingual programmes, one week is taught in English and one week in French or German. This cycle of alternating weeks is repeated and the curriculum is jointly taught in this manner throughout the academic year.



Through immersion, the language is used as the medium for everyday activities and taught within an authentic context. The aim of immersion is the development of two or more languages, as well as the appropriate knowledge of the subject content and intercultural competence. Learners are able to access the language in a natural setting where the languages of instruction are regularly used all around them. The language input is age-appropriate, comprehensible and structurally rich-language contact is also action and content-oriented. Assessments are carried out in both languages, through collaborative planning. Additionally, in alignment with UAE legislation, all learners attend Arabic lessons either for mother tongue learners (Arabic A) or as an additional language (Arabic B).

English+ programme

Our English+ programme offers the choice of studying either French or German as an additional language. All subjects are taught in English and learners attend daily additional language lessons. During these lessons, the qualified additional language teacher communicates in the target language systematically, using an enquiry-driven approach while following a specific language acquisition curriculum. Learners build the communicative language skills and competencies they will use as global citizens. The school's unique international and multilingual environment provides students with authentic exposure to French and German, through regular daily contact with native speakers.



Middle Years Programme



The International Baccalaureate Middle Years Programme is a holistic programme that requires students to develop depth of knowledge across a broad curriculum. The MYP is organised around three main principles: multilingualism, intercultural understanding and holistic learning.

The curriculum is organised around building conceptual understanding in a discipline-based model. In addition, each year at least one interdisciplinary unit will be studied. The MYP

culminates in the new MYP eAssessment suite of onscreen exams and eportfolios for the award of the IB MYP Certificate.

The curriculum consists of eight subject groups:

- Language and Literature
- Language Acquisition (or a second Language & Literature subject)
- Individuals and Societies
- Science
- Mathematics
- Arts
- Physical and Health Education
- Design

The MYP core is comprised of three additional components:

- **Interdisciplinary Learning** is focused on developing interdisciplinary and critical-thinking skills. The interdisciplinary units involve two or more disciplines working together to explore a topic with more breadth. There is a strong focus on the transfer of knowledge and skills across disciplines to develop deeper conceptual understanding.

- The **Community and Personal Projects** involve students working collaboratively (Community Project) and independently (Personal Project) on a topic or community need of their own choice, with the supervision and guidance of a tutor, completing an investigation related to their own areas of interest and particular talents.

- **Service as Action (SAA)** Service as Action (SAA) in the MYP is built on a similar model to (and therefore serves as an introduction to) the Diploma Programme CAS component. The focus of SAA is to provide authentic, real life extensions to the academic programme which benefit communities



and provides, in many cases, an element of experiential learning. While it is not formally assessed, SAA is monitored qualitatively and completion is a requirement for every year of the programme.

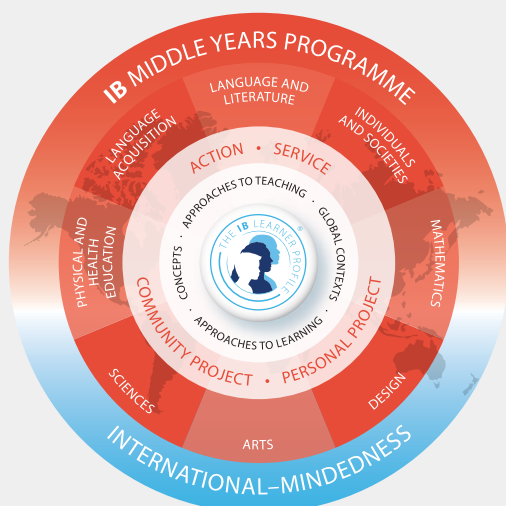
Grades and Assessment

Each examined subject is graded on a scale of 1 (minimum) to 7 (maximum) as a final grade. This grade is determined by how students perform against the four assessment criteria in each subject. Through a programme of continuous assessment, students demonstrate progress against the assessment criteria throughout the year and final achievement levels determine the overall IB grade. On completion of the fifth year of the programme, students take final onscreen exams and - if successful - are awarded the IB MYP Certificate.

Programmes

Students in the English+ programme attend four weekly lessons of French or German as an additional language. As they learn to communicate competently in English, they also move towards fluency in French or German. Intensive Arabic lessons are undertaken by all students.

Our bilingual programmes extend through to the Middle Years Programme, where students study certain disciplines in French or German and others in English. The bilingual students who take subjects in French or German as well as English are eligible for the award of the bilingual MYP Certificate on completion of the programme.





Diploma Programme



The two year International Baccalaureate Diploma Programme allows students to develop an excellent breadth and depth of knowledge. The Diploma (DP) is a truly international programme, developed in consultation and collaboration with educators from around the world.

DP students are prepared for active participation in a rapidly evolving and increasingly global society as they develop intellectually, emotionally,

physically and ethically, while acquiring the skills that will prepare them for further education and life in the 21st century.

The curriculum consists of six subject groups:

- Language and Literature
- Language Acquisition (or a second Language & Literature subject)
- Individuals and Societies
- Science
- Mathematics
- Arts or other elective subject

A compulsory core is comprised of three distinct components, and is an integral part of the DP student experience:

Theory of Knowledge (TOK) is focused on developing interdisciplinary and critical-thinking skills. TOK explores interdisciplinary themes across subjects and encourages critical reflection and analysis.

The **Extended Essay** requires students to select, research and write an in-depth, independent submission of 4000 words, usually in one of their six subject areas. The Extended Essay requirement offers IB Diploma candidates the opportunity to become familiar with the independent research and writing skills expected at university.

Creativity, Action, Service (CAS) work.

CAS is a fundamental part of the Diploma experience, helping students to grasp the importance of extracurricular activities as an integral part of life, and as a healthy counterbalance to the academic world of scholarship and study.



These initiatives and activities are a key part of our students' education, and include local and global community outreach projects, charity drives, Model United Nations, sports and many more.

Grades and Assessment


Each examined subject is graded on a scale of 1 (minimum) to 7 (maximum). The award of the IB Diploma requires a minimum total score of 24, based on the principle that a grade 4 represents a passing level in each of the six subjects.

Excellent performance in the six subjects results in a grade 7 for each, or a total score of 42 points. Students can earn an additional 3 points for superior work on the Extended Essay and in Theory of Knowledge.

Programmes

Our bilingual programmes extend through to the Diploma Programme, where all students study English Language and Literature. In addition to this, we encourage those who have the relevant experience to study Language and Literature in French, German or Arabic, which results in the award of a bilingual diploma.

For those who are not yet bilingual, our English+ programme will ensure that all students achieve a certain degree of bilingualism, depending on the level at which they study.

A photograph of three young women walking towards the camera in a brightly lit school hallway. They are wearing red polo shirts and black shorts, which are part of the Swiss Baccalaureate uniform. The woman on the left is wearing glasses and holding a blue folder. The woman in the middle has blonde hair and is looking directly at the camera. The woman on the right is smiling and has a backpack on. In the background, other students are visible, slightly out of focus. A semi-transparent dark box with white text is overlaid on the left side of the image.

The Swiss Baccalaureate programme offers a comprehensive general education at secondary level, with the diploma being recognised both within Switzerland and internationally.



Swiss Baccalaureate

In Grades 6-7 students are to attend preparatory classes.

These two years in our so-called hybrid classes (German-English bilingual, IB combined with Swiss Baccalaureate Curriculum) lay the foundation for a successful Swiss Baccalaureate education.

Upon completion of this two-year phase, a student can be admitted to the Swiss Baccalaureate section or can switch to our MYP/DP programme. The final decision to join the Swiss Baccalaureate section is taken in Grade 7. The curriculum then covers ten basic subjects, one core subject (a specialist subject) and one supplementary subject (Grade 10-12). At SISD we prepare students for the bilingual Swiss Baccalaureate. Beside English Language Arts, three subjects are examined in English: Geography, History and the chosen Supplementary Subject.

7-year programme (Grade 6 – 12)

• 10 basic subjects

- 1st language: German or French
- 2nd language: English
- 3rd language: French or German
- Maths
- Biology
- Chemistry (G9-12)
- Physics (G10-12)
- History
- Geography
- Arts (Music or Visual Arts)
- 1 Core Subject (G9-12)
- 1 Supplementary Subject (G10-12)
- Extended Essay





Visual Arts, Music and Design



The importance of self-expression through the arts is emphasised right from the Early Years and Primary School through to Secondary School. At SISD, students get a solid foundation of knowledge and get to develop themselves in an inspiring environment that promotes innovation, creativity and global perspectives.

SISD offers excellent learning conditions for both practical and creative work and theoretical studies, plus dedicated music, arts and design rooms for those who want to develop themselves creatively. Our cutting-edge facilities allow plenty

of space for drama performances and visual arts exhibitions. Specialist teachers are employed by the school with lessons taking place during the school day and after school.

Visual Arts

In art lessons, students produce work as artists, as well as undertaking academic study. Teachers expose children to the techniques necessary to express themselves, encouraging problem-solving whilst employing the necessary creative thinking skills. Students work in varied fields such as drawing, painting, printmaking, photography and sculpture.

By developing curiosity about themselves, others and the world, they become effective learners, enquirers and innovators. Key concepts in the visual arts which drive unit development are Aesthetics, Change, Communication and Identity. Students create, perform and present artworks in ways that engage and convey feelings, experiences and ideas. Through this practice, they acquire new skills and master those developed in prior learning.

Music

Music plays a vital role in the school community. There are many opportunities for students to become involved with music and performance, through the PYP, MYP and DP curricula, as well as the after-school activities programme. Performances are presented by grade groups, or in other smaller ensembles. The emphasis is on participation, teamwork, personal development and quality, particularly when music links with drama to the staging of a school musical.



Students of all ages have the opportunity to become involved in choirs, orchestras and bands, with regular events being organised to enable students to perform. All grades have access to acoustically designed music rooms with an impressive range of musical instruments and equipment ready at their disposal.

Design

Design and the resultant development of new technologies, has given rise to profound changes in society, transforming how we access and process information, adapt our environment, communicate with others, solve problems, work and live.

From secondary school onwards, design and product design challenges students to apply practical and creative-thinking skills to solve design problems, encourages students to explore the role of design in historical and contemporary contexts, and raises students' awareness of their responsibilities when making design decisions and taking action.





Technology Innovation



SISD is committed to embracing technologies that support our vision of education and make learning experiences stimulating and interactive. Our school has made a commitment to providing digital resources and learning opportunities for teachers and students to acquire the skills needed to integrate technology for real world experiences.

Students gain experience and build on skills with contemporary tools that they will use to thrive and contribute in an ever-changing, globally-connected world. Learners explore the issues of their world

through interactive media, they connect to others via social networks and share their ideas and projects in videos and virtual galleries.

From Grade 4 onwards, all students are provided access to Microsoft Cloud-based productivity tools such as Email, Word, Excel, and Powerpoint, and are expected to experiment actively and to use these tools to augment and re-define their learning experiences.

Our Technological Innovation department is dedicated to actively supporting the integration of STEM (Science, Technology, Engineering and Mathematics) into the PYP, MYP and DP curricula. In partnership with teachers, they design, develop and implement instructional content, courses and projects leading to a fully immersive STEM integration. Co-teaching support is also provided in activities such as coding, robotics, app development, design thinking and 3D printing.

We also recognise that not all learning takes place during class time. At SISD, traditional style ICT labs are transformed into Innovation Labs equipped with resources to support student-led and passion-driven projects including entrepreneurship.



Secondary students are welcome to use the Innovation Lab facilities outside of classroom hours at recess, lunch breaks and after hours to work on personal projects such as app development, product design, robotics development and more.

Based on student feedback, our team selectively supports competitions and events such as Hour of Code, The Formula 1 in School Competition, First Lego League, 3D Design, the KenKen Math competition and many other locally-run learning activities.



Boarding School



The Swiss International Scientific School in Dubai (SISD), offers local and international boarding students a premier education focused on both academic excellence and personal growth.

Our boarding students are immersed in an exceptional learning environment, which inspires them to become confident, responsible and compassionate towards the needs of others. There are countless benefits offered to a young person who becomes a boarding student at SISD. Boarding provides an excellent transition from home to

independence and helps to build the self-discipline that is beneficial for life at university and in the workplace. The nurturing environment offered at SISD encourages our boarding students to develop into healthy, mature, emotionally intelligent and responsible young individuals.

Leaving home can be an emotional time for a young person and their parents. At SISD there is a warm atmosphere on the campus, and particular care is taken to ensure that students are safe, settled and happy. Boarders are well-integrated within our student community and are offered outstanding levels of pastoral care, reflecting our commitment to creating a genuine home away from home.

Part of this commitment is ensuring that our boarding students have a healthy lifestyle with a balanced diet. Meal times are structured with students and staff eating a warm nutritious meal, served together in the dining room.

Every boarding house has its own carefully selected staff, who care for the boarding students' welfare and practical needs. They continuously monitor the well-being of the boarding students in a family atmosphere, in which all are free to express themselves. A nursing service is available on campus, with a sick room accessible. The school doctor is close by and the excellent Mediclinic City Hospital is within ten minutes' reach.

The twenty-four hour nature of boarding means that the staff live alongside the boarding students and they are always on hand to offer support, guidance and advice. The boarding students follow a structured routine, which encourages them to get the most out of their time



One of the many benefits of being a boarding student is that tutors are available throughout the week to assist the students with their studies.

Homework sessions are supervised and help can be provided if necessary. Boarding staff liaise with the teaching staff in the school; this ensures that they are aware of their students' academic progress, including any areas of concern and can offer support and advice accordingly.

Filled with natural light, our spacious boarding houses are designed to inspire and engage young minds. Boarding students are accommodated in modern and generously-spaced double rooms. Every room has protected Wi-Fi access, air conditioning, integrated en-suite facilities and a private study area.

There is also a common room which acts as a social hub to allow boarding students to unwind after a long and active day. The boarding houses are positioned in a state-of-the-art campus which aims to stimulate our boarding students' curiosity and creativity.





Pastoral Care



The boarding staff encourage boarders to participate in a range of challenging activities to help develop new skills and unleash the hidden potential that every child possesses.

In addition to enjoying our impressive facilities, boarding students also participate in off-campus weekend activities arranged and supervised by the boarding staff. Dubai offers many engaging activities, from desert safaris, sailing, horse-riding, go-karting, golf, paintballing, water parks, camping trips with wadi adventures, just to name a few. There are also times for relaxing pursuits, for

example, trips to the beach, cinema or visits to cultural sites within the UAE. In addition to the off-campus trips, all boarding students have access to the extensive After-School Activities (ASA) programme. As a multilingual school in a multicultural country, the cornerstone of our philosophy is the exchange of ideas among students from all backgrounds and all cultures.

Boarding options

Care is taken to ensure that our student body is culturally diverse and students come from around 60 different nationalities. We seek to develop individual personalities, including a sense of responsibility that will allow each learner to become a responsible global citizen.

Full Boarding

Full boarding students spend the semester on campus and return home for the holidays. They enjoy a range of enriching evening and weekend activities, but they also have time to relax, catch up on homework and use the facilities on campus. If a full boarding student has a guardian or family member who lives locally, they are able to visit them off-campus, provided parents' permission has been given.

Weekly Boarding (Sunday-Thursday)

Weekly boarding students are able to fully immerse themselves in life on campus during the weekdays and return home on weekends. They return home on a Thursday afternoon and rejoin the boarding house come Saturday evening.

Flexi-boarding

Flexi-boarding is reserved to SISD day students who wish to stay in the boarding house for a short period of time, whether it is for just a few nights or several weeks

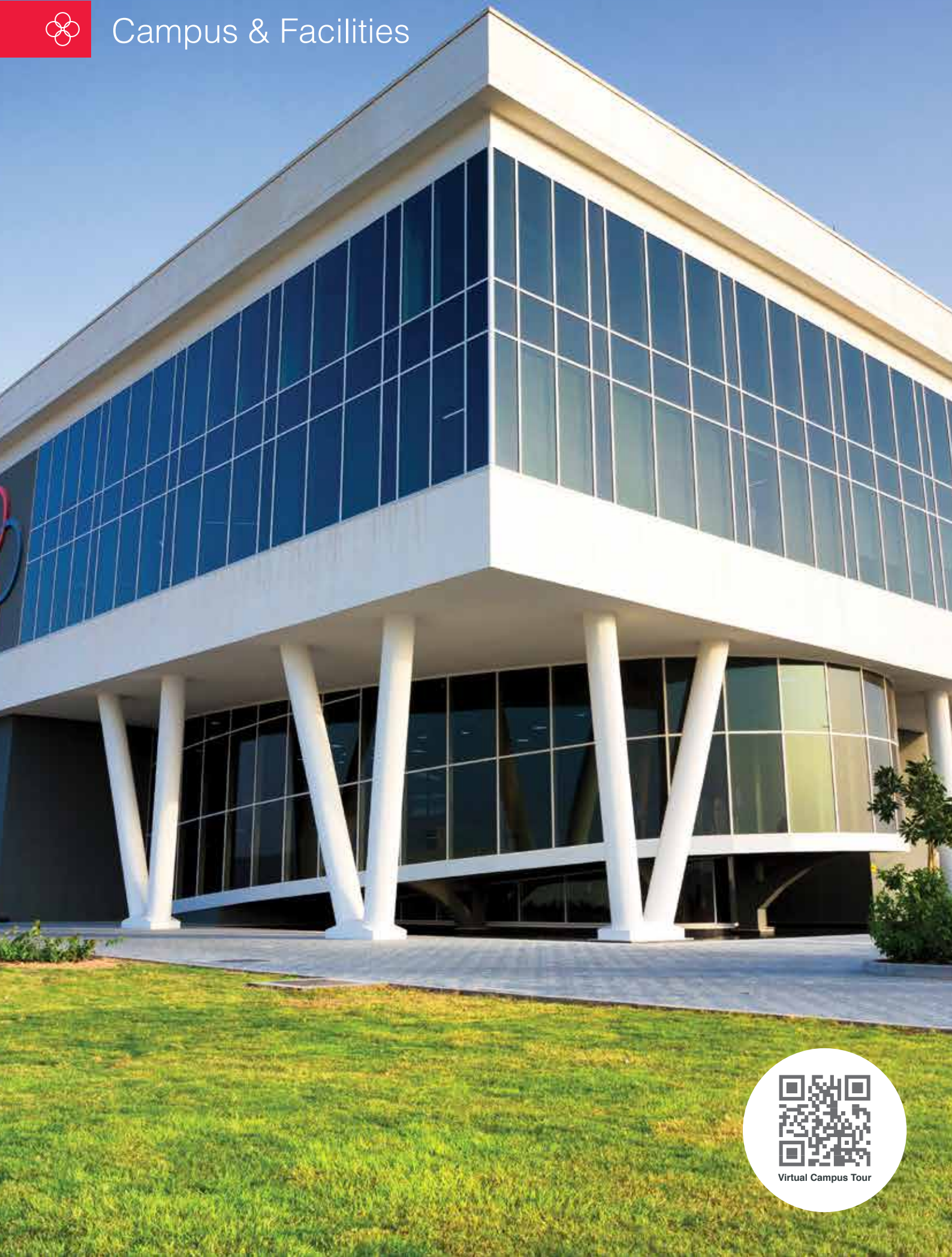


City	Flight time from Dubai International Airport
Dammam	1 hour 30 minutes
Riyadh	2 hours
Tehran	2 hours
Islamabad	3 hours
Delhi	3 hours
Mumbai	3 hours
Tashkent	3 hours
Baku	3 hours
Almaty	4 hours
Cairo	4 hours
Astana	4 hours 30 minutes
Istanbul	5 hours
Moscow	5 hours 30 minutes
Kiev	6 hours
Guangzhou/Shanghai/Beijing	7 hours
Lagos	8 hours





Campus & Facilities



Virtual Campus Tour

With a maximum capacity of 2,000 students, including 350 international boarding places, the Swiss International Scientific School has been designed by leading architects to meet the highest of standards.



Our school is an inspiring place for students to learn. Filled with natural light, our spacious classrooms, libraries, laboratories and sports facilities have all been designed to engage your child and encourage learning.

Sustainability

SISD is an eco-friendly campus, meeting the highest standards of energy consumption. This benefits student well-being, providing a healthy and comfortable environment that supports learning and helps students achieve their full potential.

We have worked with various prestigious organisations to develop the first ever purpose-built infrastructure in a desert climate to meet Minergie standards: EPFL (Ecole Polytechnique Fédérale de Lausanne), Sorane S.A., Archilab S.A. and Minergie.

Minergie standard

The building has been engineered to be a high-grade structure with the best air tightness and the highest insulation standards, to reduce air loss as well as heat transfer, known as thermal bridge. At the same time, the light transmission has been optimised to reduce electricity consumption. SISD is a pioneer in the development of a better educational environment.





Life at SISD is full of variety and opportunities. Students enjoy a broad, challenging and holistic environment. The Swiss International Scientific School in Dubai brings students from over 60 countries together. Our lively and diverse student body plays a big part in creating the truly international experience we offer.

In addition to our challenging academic studies, we make time for fun, teamwork and human connection. At SISD, we strive to build a community of global citizens who lead a healthy lifestyle and are respectful of others as well as our shared environment. In June 2016,

our efforts to improve healthy eating, active living and in creating a positive environment were recognised by the Knowledge and Human Development Authority in Dubai (KHDA), with the Happy Healthy School Award.

Pastoral care

SISD values the well-being of our students, including the social, emotional and behavioural aspects of their lives at school and in the community. As such, we have developed and established a network of support and care that enables students to prosper emotionally and socially, which in turn, helps them to thrive academically.

Pastoral care is built into the school curriculum, and is comprised of a framework that includes homerooms, Moral Education lessons, Extended Personal Development, Islamic Education and a robust system to monitor and reward behaviour. We also provide students from all grades with access to dedicated school counsellors who can deliver academic and emotional support and advice.

Student Council

The Student Council is comprised of representatives from each of the homerooms. These students serve their peers as contact points for providing feedback to leadership concerning the improvement of student life.

Additionally, throughout the school year the Student Council organises and sponsors several events, taking the lead and getting real-life experience. Upper grade students are expected to step into leadership roles and run meetings, delegate tasks and propose initiatives.



House system

An integral part of the school's spirit is the house system. Each student is allocated to one of four houses: Bern, Geneva, Lugano or Zurich. As the school year progresses, students earn points for their respective houses by way of academic, athletic, cultural and spirit competitions and initiatives. The diverse nature of these competitions allows for students of varied skill sets to earn points towards the house competition trophies, presented at the end of each academic year.



Health & Nutrition



Health

Your child's health is important to us. SISD has two fully-equipped medical rooms in the primary building and one school clinic located in the sports building. These are open every school day between 7:30am and 5:00pm and are staffed by DHCC registered nurses.

The school nurses are responsible for assessing and managing chronic and acute illnesses, carrying out first aid and emergency care for school-related injuries, intervening with current and potential health problems and promoting health and safety among the school community. All of them are available to consult with parents as needed, regarding health related concerns, either in person, by telephone or via email.

Furthermore, a family consultant from Mediclinic City Hospital visits the school twice a week to provide consultations and routine medical check-ups. Once a year, our students undergo a comprehensive medical examination. They also participate in health education activities and health awareness campaigns at the school conducted and/or organised by the SISD Health Department.

Nutrition

At SISD, we support healthy eating habits and pride ourselves on working with parents and students to create the best possible conditions for learning and development.



Our team of chefs is dedicated to sourcing the finest ingredients with as much local and organic provenance as is practicable. These ingredients are then crafted into dishes that are nutritionally balanced, taste good and are presented to the students with great care. Not only does this help our students avoid health problems, it gives them a strong basis for emotional balance and directly enhances their performance in and out of the classroom.

Alongside our desire for excellent cuisine, we are also fully committed to meeting specific dietary requirements. Students are served a full set meal with a choice between vegetarian and non-vegetarian and every meal is based on healthy and nutritional standards to support students in their physical development. Our menus are changed on a monthly basis and a committee including representatives of the school, parents and the catering team meets regularly to discuss and implement changes and improvements.

Our Early Years students receive their meals in the classrooms and are guided and helped by their teachers. From Grade 1 onwards, the students go to the canteen for a warm meal at lunchtime and choose from the varied selection of food on offer.





Field Trips



Field trips are an integral part of school life at SISD and are authentically linked to the academic curricula throughout the school. Careful planning and thought goes into organising visits and activities that will enrich, educate and inspire students.

Some trips are designed for specific age groups to improve their understanding of classroom material through practical experience. Others bring together students of different ages to encourage interaction. Shorter or longer trips are

offered with the ultimate goal of promoting learning and enquiry. We go to great lengths to offer our students other valuable opportunities beyond the classroom which will enrich their understanding of the world.

Outdoor Educational Trips

We organise outdoor educational trips to enhance personal development, increase self-confidence and develop leadership skills. Field studies provide positive experiential learning opportunities.

Students gain increased personal awareness and a greater appreciation for the outdoors. Depending on grade levels, primary students spend 1 night and 2 days camping with the support of instructors and teachers and experience field studies and adventure programmes run by qualified instructors.

Ski Trip

We strive to educate young people who appreciate and value physical activity and fitness. By participating in our annual ski trip, our older primary students learn about the importance of disciplined practice and are introduced to good sportsmanship and athleticism. The week-long trip to Verbier, Switzerland offers students a chance to develop their self-confidence while experiencing the splendour and grandeur of the Swiss mountains.

Beyond Borders and Boundaries

The Beyond Borders and Boundaries programme is an opportunity for students from Grades 6-12 to extend themselves outside of the classroom. This is accomplished through activities to develop skills, team building as well as community and service engagement tasks off the school campus.

Participants develop themselves as global citizens by gaining unique **cultural, personal, interpersonal and environmental** experiences not accessible in a standard classroom set-up.





School Teams and After-School Activities



The Physical Education (PHE) and After-School Activities (ASA) Departments at SISD provide a variety of opportunities to a large number of students, developing skills and sportsmanship while fostering talent and striving for excellence.

At SISD, we believe that sports competitions and after-school activities help our students have fit and healthy lifestyles, work together, acquire leadership skills, and learn to make decisions

under pressure. We are proud of our robust and competitive programmes, grounded in the idea that all students should be given the opportunity to reach their full potential.

Sports teams

Together with our coaches and teachers, we strive to provide our students with numerous opportunities to play different sports. We use training sessions and official matches as opportunities to teach students valuable life lessons. We strongly believe that the SISD sports experience helps prepare students for the competitive world of higher education and professional life. It is our goal to use competitive sports to build on the values, lessons and instructions provided during day-to-day lessons. We aim to instill an unmatched sense of pride through commitment, teamwork, perseverance, effort and the ability to represent the school in official athletic competitions.

After-school activities

SISD provides a rich after-school activities programme tailored to support student development. Students are able to choose from a wide range of activities that are offered daily and meet the needs of each year group.

SISD offers both internal and external after-school activities:

- Internal activities are run by SISD teachers and are included in the school fees. They range from sustainability club, concert band, drama, homework help, TED club, piano, baby football, choir, film, language clubs, cultural clubs, book clubs, student council, arts and crafts to many more.
- External activities are offered by reputable external providers at an additional fee. The wide range of activities includes: football, tennis, swimming, water-polo, basketball, rhythmic gymnastics, Parkour, baby ballet, hip hop, yoga, drama, martial arts, mad science, robotics, coding, Spanish, Chinese and many more..





University Recognition



Ensuring that our students are equipped for future success is central to our school life. Our College Counselling Team will guide and support our students as they prepare for life beyond our school.

With specialists from English, French and German-speaking countries, the team provides structured information and guidance across a range of further education options. In close collaboration with the Head of Secondary School, class teachers and

parents, our students begin their preparation at the start of Grade 9, researching courses, universities and entry requirements. They are encouraged to define their goals for the future and are challenged to think broadly about their future aspirations.

Throughout this process, our counsellors are there both to challenge and support decision making and are available to meet with students and parents.

IB Admission to International Universities:

The IB Diploma is accepted in 90 countries in over 2,000 universities.

IB Admission to Swiss Universities:

Most Swiss universities require 32 out of a possible 42 points (excluding extra points) and have additional Higher Level (HL) subject requirements. ETH Zurich and EPF Lausanne require 38 of 42 points (excluding extra points) and have stringent HL and Standard Level (SL) subject requirements. Please check with the respective university for their recognition policy or go to www.ibo.org/recognition/university for further information.

Swiss Baccalaureate admission to International Universities:

The Swiss Baccalaureate diploma allows students to study at international universities. Please check with the respective university for specific admission requirements.

Swiss Baccalaureate Admission to Swiss Universities:

Holders of a Swiss Baccalaureate do not have to take part in an admission process if they wish to study at a Swiss university (with the sole exception of medical studies).

IB International Recognition:

Universities and colleges benefit from recruiting and admitting students from IB programmes in a range of ways, with IB programmes developing the knowledge, skills and the required disposition students will need to be successful throughout their university careers.

Every university in the UK now accepts the IB Diploma. IBDP students regularly enter top-tier institutions. In the US and Canada, the IBDP and Course Certificates (Higher Level) are increasingly recognised, with many universities conferring credit or advanced placement of up to one year for them.

As a result of their time in the IB, students develop: time management skills and a strong sense of self-motivation; a keen interest in civic engagement; notable academic abilities; strong research and writing skills; critical thinking abilities and an international outlook.

Research suggests, for example, that IB students are more likely than their peers to complete their undergraduate degrees and pursue graduate work and that they are more likely to be engaged in various aspects of university life. According to the research, IB students are strong on: student leadership activities; working with university faculty on research projects; finding opportunities to study in other countries; tutoring other students; taking part in voluntary & community service and completing internships.





Admissions



The Swiss International Scientific School in Dubai (SISD) has an inclusive admissions philosophy and is open to all students who can benefit from the education offered, regardless of their nationality, race, gender or language.

The Admissions team supports new families through the admissions process to make the transition to our school as smooth as possible. In preparation of the admissions process, all relevant information regarding personal, academic, social/emotional and physical development are

taken into consideration. The child's previous school history and academic achievements, the language profile and level, the level of maturity and the age as per KHDA regulations, are also considered.

Applying is a simple process.

STEP 1:

Online application is completed and all supporting documents are uploaded:

- Most recent nursery or school report
- All Passport(s) and ID's
- Learning difficulty diagnostic testing or educational assessments (if any)
- Psychological assessments (if any)
- Custody papers (if any)

STEP 2:

Interview and assessment: Once the completed application with all supporting documentation has been received, the admissions department request a confidential teacher recommendation from the applicant's current school. The applicant is then invited to an interview and assessment.

STEP 3:

Offer and Acceptance: Once admitted to SISD, parents will receive an offer letter. A child's place is not secured until the admissions department has received the signed offer letter and proof of payment of the registration fee.



Please contact us for further assistance

Email : admissions@sisd.ae

Phone : +971 4 375 0600

We very much look forward to welcoming your child at the Swiss International Scientific School in Dubai.



Our Location



How to reach us

SISD campus is located within Dubai Healthcare City Phase 2, adjacent to Dubai Creek, near the Creek Metro Station, at the foot of Business Bay Crossing and opposite Festival City.

1. Take Al Khail Road in the direction of Business Bay Crossing
2. Take the Al Jaddaf exit (last exit before Business Bay Crossing)
3. Keep right
4. Take the first exit from the roundabout
5. Follow the road past the workshops until you see our school building
6. Park at the school





Fact Sheets



BILINGUAL



EXCELLENCE



SUSTAINABILITY



TOGETHER



SCHOOL ADDRESS Dubai Healthcare City, Phase 2, Al Jaddaf, Dubai
ADMISSIONS +971 4 375 0600 | admissions@sisd.ae
www.sisd.ae

Follow us     

© 2019, Swiss International Scientific School